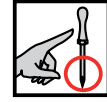


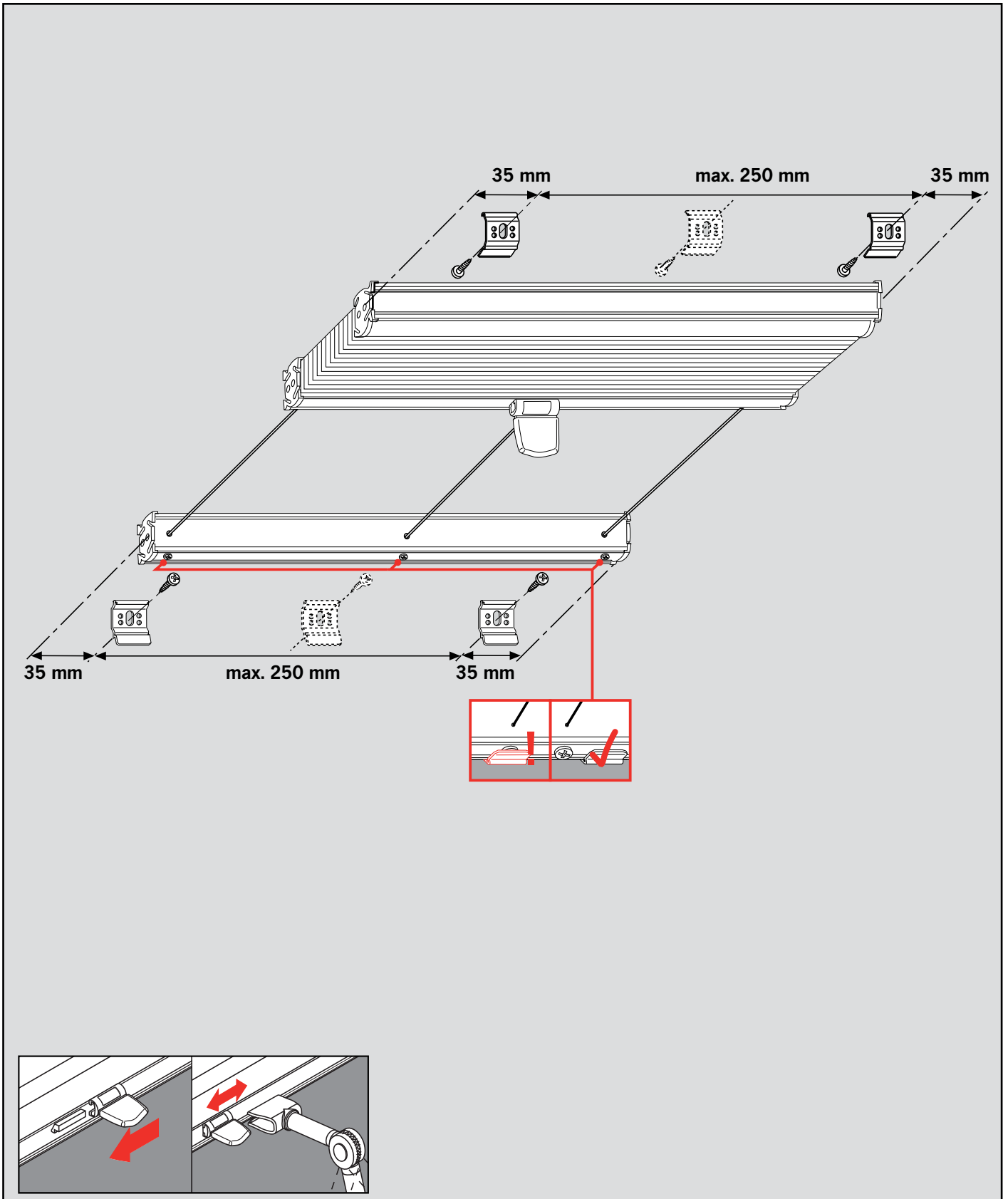


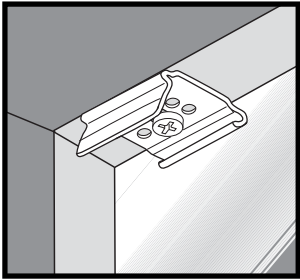
MONTAGEANLEITUNG: PLISSEE FÜR WINTERGARTEN



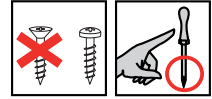
Plissee "PL11"

Wichtig! Bitte mit der Pflegeanleitung aufbewahren!

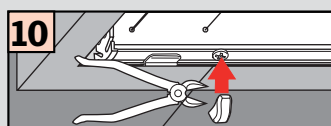
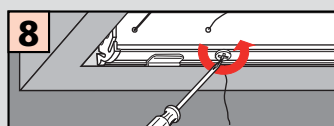
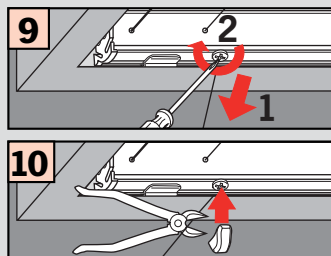
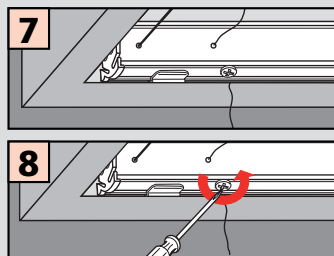
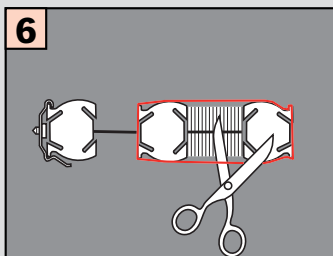
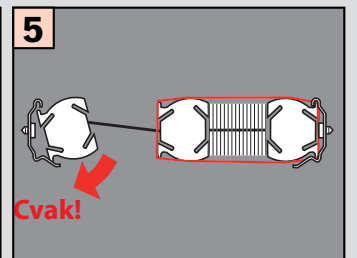
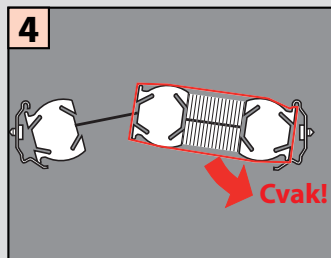
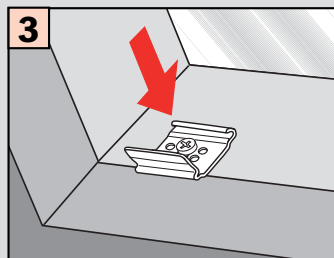
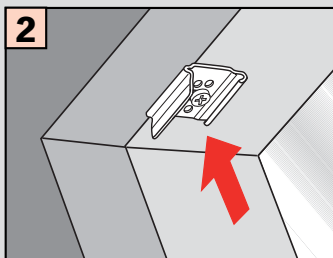
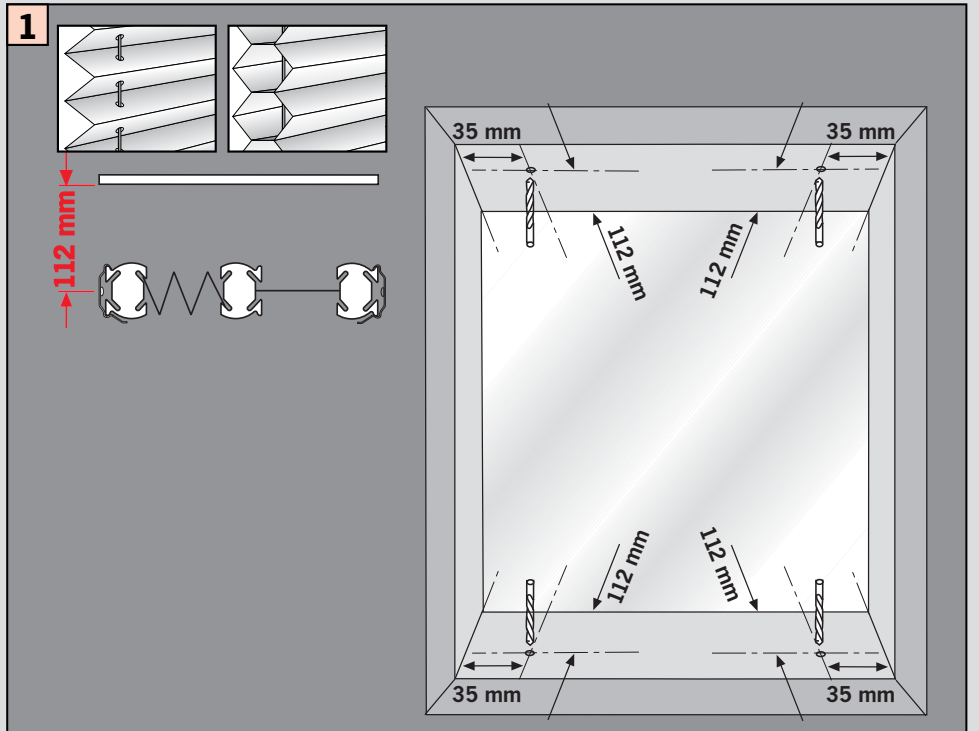




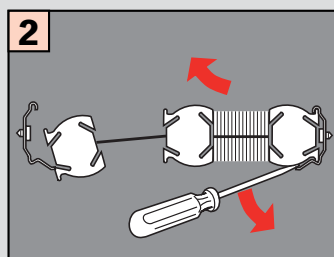
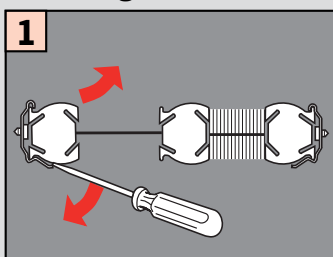
Falzmontage

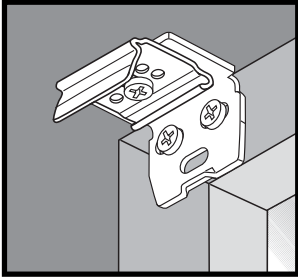


Montage

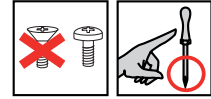


Demontage






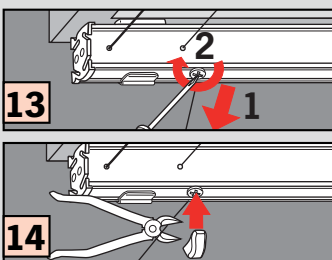
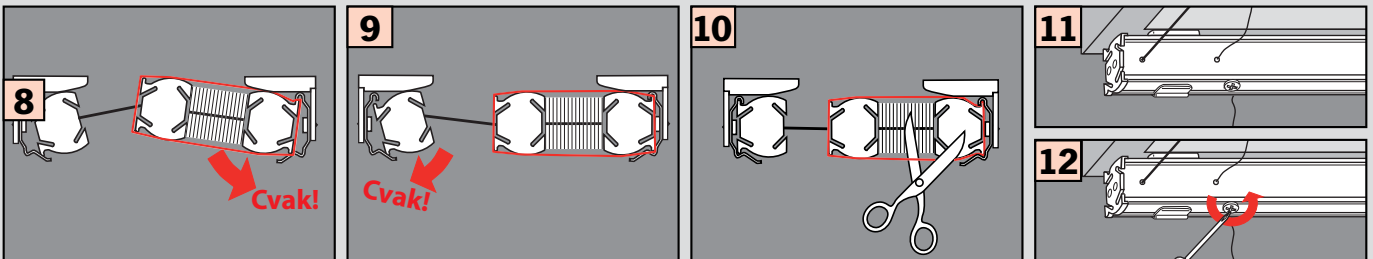
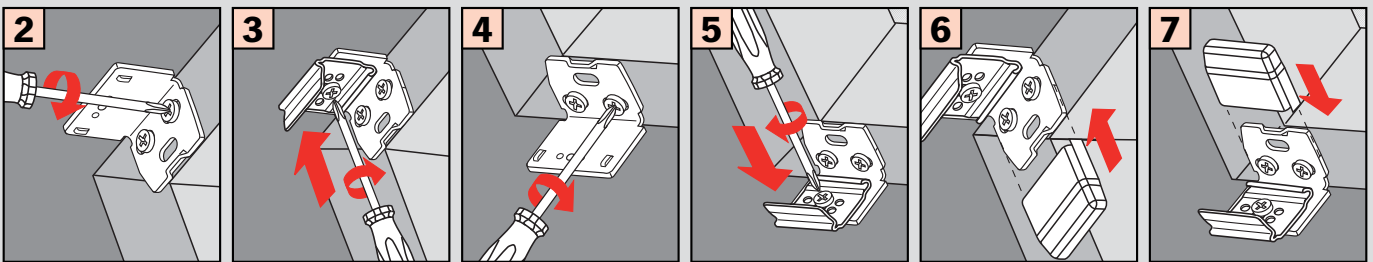
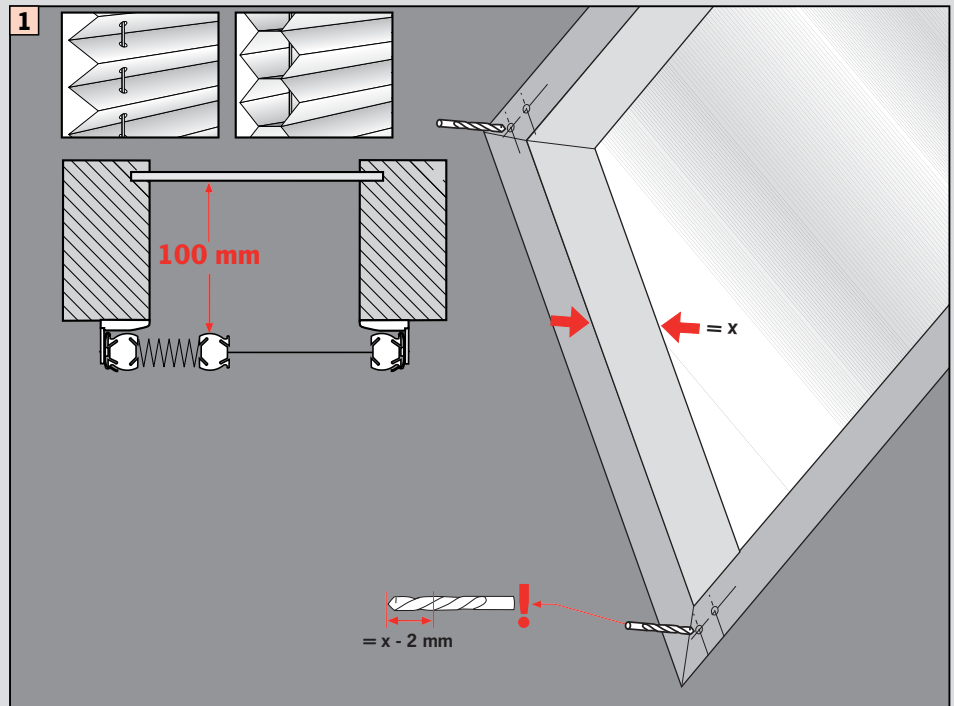


Winkelmontage



Montage

-  2,2 mm Ø
-  2,0 mm Ø
-  1,5 mm Ø



Demontage

